

**IRISTEXT Mark  
Video Billboards & Message Generators**

Those who communicate messages are always in search of attractive ways to carry their information more effectively. IRISTEXT answers that need for **internal communication** and information in public areas.

IRISTEXT is used to rapidly reach the greatest number of people. It broadcasts information through a network of video monitors or television sets installed in the most frequented areas. IRISTEXT is ideal for information that needs continuous updating.



IRISTEXT Mark II

IRISTEXT's integrated design allows non-technical personnel to quickly create and update attractive messages combining text on pre-composed resident backgrounds and graphic illustrations. All composition happens in real time with easy-to-use editing features. Data is stored in nonvolatile memory for unequalled reliability and fast retrieval.

With the broadcast-scheduling feature, information can be programmed to appear just at the right time. Events can be scheduled by date, hour, minute and second to control a message presentation.

IRISTEXT Video Billboards are dedicated **reliable 24x7 equipment** designed specially to accomplish a very specific task: the editing and broadcasting of **information**. IRISTEXT can control an unlimited number of other IRISTEXT Video Billboards via **Internet** or local network.

**IRISTEXT Mark**

IRISTEXT's Mark line includes 4 models designed with 24x7 technology. The Mark IV and Mark V require a Personal Computer for editing while the Mark II is completely stand-alone. The Mark III is a broadcast only unit. It can display messages created on another Iristext unit or a PC using I-Reach software. All models also include a clock/calendar, an express message crawl and *unlimited telephone support for 60 days*.

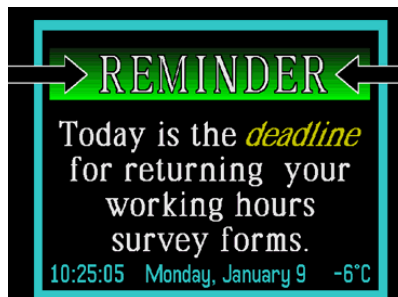


IRISTEXT Mark III

Other applications



Attractive messages are quickly prepared using resident backgrounds and graphics



Time and calendar included  
Local temperature optional



An express message can be given top priority by circulating continuously on 1 line of the screen.

Built-in every Mk models, a crawl banner can include up to 5000 characters of text message (See <<< Express Message Line>>> on above screen). All attributes such as on screen position, crawl speed, background colour and width, font size, or text colour can be defined.

When needed, the crawl can be activated to display continuously, or under display scheduling: at once during only one page or for the duration of many pages.

### IRISTEXT Mark IV and Mark V

Both models are used for broadcasting messages created on PC using **I-Reach** software running under Windows. The user can prepare, in advance, all his messages and schedule in a PC file.

Everything is then transferred in the Mark unit through the PC serial or **USB** port\*\*. Once the transfer is completed, the PC can be turned off, and the Mark unit will broadcast and update contents according to schedule. The unit can be sited locally or remotely.

- I-Reach message editing software included
- Broadcast scheduling
- Express Message: 2 modes
- Remote communications
- 60 resident graphic backgrounds
- Non-volatile memory capacity: 250-1200 pages
- 17 typeface styles
- 48 fonts with fully adjustable proportional spacing, border, shadow, italic and bold.

### IRISTEXT Mark V

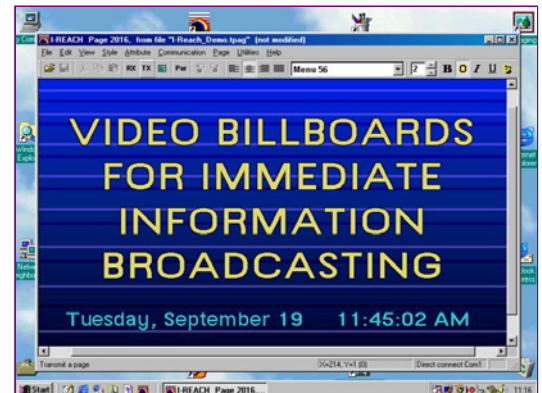
The **I-Mk-V** model includes all above I-MkIV features plus an overlay card to insert text messages, graphic elements or a crawl banner (Express Message) over an incoming video (Composite or S-video). The crawl banner can be transparent, semi-transparent or opaque.

Models: **I-MkIV** (witout overlay), **I-MkV** (with overlay)

- Options:  
local temperature display,  
S-Video output or Video Overlay card (included with I-MkV)
- Software option: I-G9980



IRISTEXT Mark IV or Mark V



Messages are created on your PC  
by using **I-Reach** software

**Free I-REACH Demo Software**

[http://www.teledac.com/ireach\\_demo\\_form.html](http://www.teledac.com/ireach_demo_form.html)



The I-MkV can overlay messages  
on a "live" video program

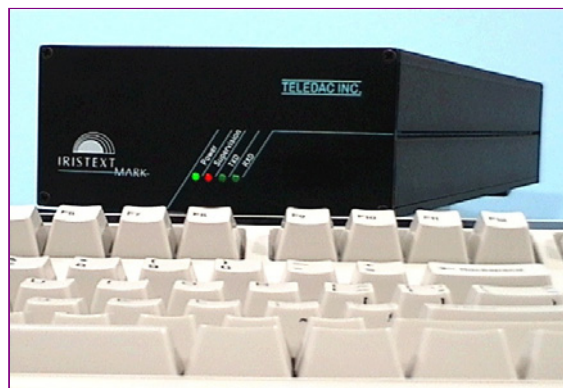
**Click for demo via YouTube**

## IRISTEXT Mark II

One channel video billboard for edit or display, locally or remotely. This stand-alone unit, with a keyboard, can edit or broadcast messages without a personal computer. (2010-06+ Black Keyboard)

- Broadcast scheduling
- Remote communications
- Express Message: 2 modes
- Vectorial graphic creation
- Automatic color gradation in single scanlines
- 60 resident graphic backgrounds
- Non-volatile memory capacity: 250-1200 pages
- 17 typeface styles
- 48 fonts with fully adjustable proportional spacing, border, shadow, italic and bold.

Model: **I-MkII**



IRISTEXT Mark II

- Options:
  - local temperature display
  - S-Video output or Video Overlay card
- Software options: I-Reach and I-G9980

## IRISTEXT Mark III

One channel remote broadcast video billboard, same as IRISTEXT MkII but without editing functions and without keyboard. Broadcasted information has to come from an I-MkII, I-4000-Se, We, S2, or a personal computer using I-Reach software.

Model: **I-MkIII**

(See first page for IRISTEXT Mark III picture)

- Options:
  - local temperature display
  - S-Video output or Video Overlay card
- Software options: I-Reach and I-G9980

**TELEDAC INC.**

Direct Tel.: (514) 362-6362  
Toll Free: 1-888-659-6362

### Multiple Remote Access

With I-Reach and Remote Desktop (RDT), one or more persons can easily be appointed for entering and updating each type of information to be broadcasted.

Remote Desktop (RDT) is a Windows application program. Using RDT, each information provider can control the I-Reach computer remotely via the internet (or local network), as if he was sitting right in front of it.

For a project quote, [please e-mail](#) or call toll free at 1-888-659-6362

### Options & Accessories (Click for listing)

<http://www.teledac.com/4000opt.htm>

### Compare with other Iristext Models

[http://www.teledac.com/4000\\_comp.pdf](http://www.teledac.com/4000_comp.pdf)

### Technical Specifications (Click for listing)

[http://www.teledac.com/specs\\_mark\\_4000.pdf](http://www.teledac.com/specs_mark_4000.pdf)

Required video monitor not included.

\*\* Personal Computer (PC) required, not included

**TELEDAC INC.**

Direct Tel.: (514) 362-6362  
Toll Free: 1-888-659-6362