

## Important:

Since 2007, dates for the **Daylight Saving Time** have changed. **IRISTEXT** units designed before 2007 are programmed (in automatic mode) to go on **DST** on previous dates (1st Sunday of April, 2 Am to last Sunday in October 2, Am). Consequently, if you are concerned by this change, your Iristext unit must now be set to manual mode, otherwise its clock will go forward (or backward) by one hour at the wrong time.

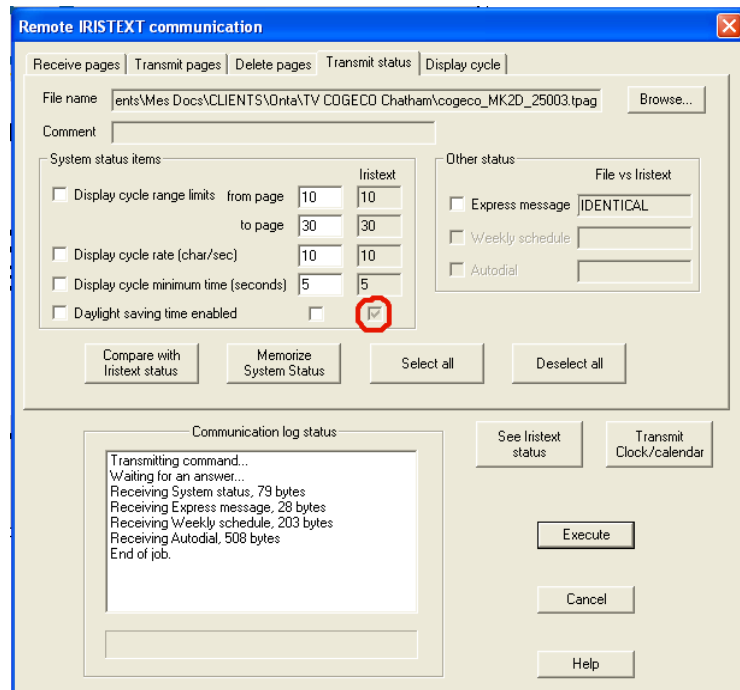
Thereafter, those living in a region where new **DST** time dates have been adopted, will have to do DST and Normal Time changes manually on these Iristext units, twice a year at the right time.

These changes can be done rapidly by using the **I-Reach** software as detailed below:

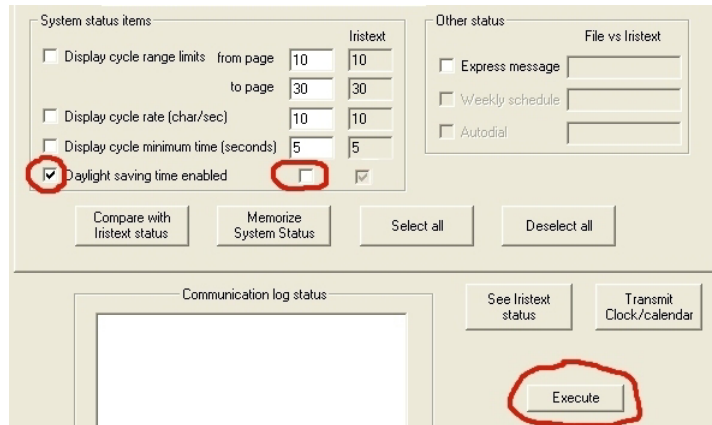
## How to confirm that your DST setting is in the manual mode?

- 1- With **I-Reach**, go to the communication menu, and then click on **Transmit status** tab.

Click on **Deselect all** then on **Compare with...** you will obtain the following results:

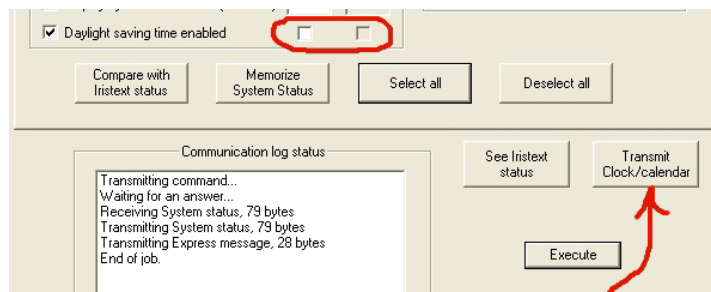


- 2- If your Iristext unit is in automatic mode, the corresponding box (circled in red below) will be checked. To change this setting to manual, simply uncheck the box corresponding to this status in the file. Then check on the left of **Daylight saving time enable** and click on **Execute** to transmit this part of the status. (See below)



Subsequently click on **Memorize System status** to store that state in your file.

- 3- To check it all, click again on **Compare with Iristext status**, the result should be as outlined in red in the picture below:



- 4- Finally, you can now click on the **Transmit Clock/calendar** button as shown above. This will synchronize your Iristext clock on your PC clock.

Thereafter, twice a year, it is only that last step that you need to do at each **DST** time change. (Once your PC clock is at the right time)